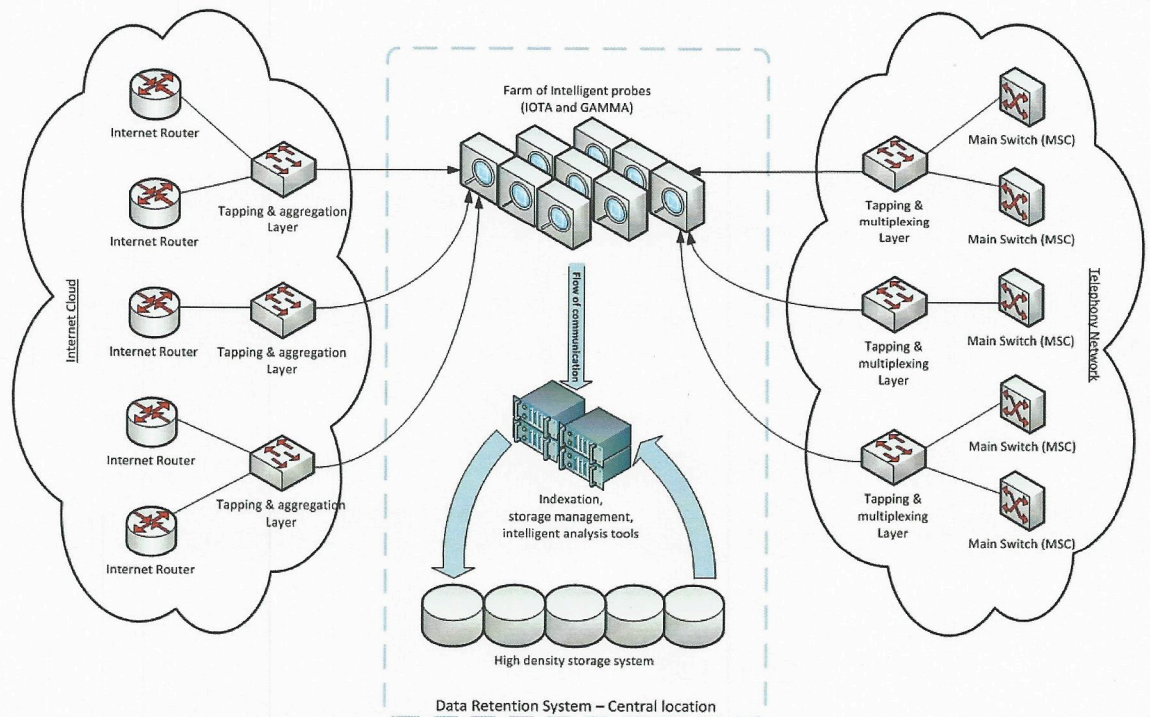


DATA RETENTION SOLUTION

FULL SCOPE COVERAGE ■ BILLING ■ METADATA & CONTENT



INTELLIGENT DATA RETENTION SOLUTION

Based on CEREBRO-DRS product, Advanced Middle East Systems offers a versatile, flexible data retention solution for services providers and intelligence agencies.

Thanks to GSM passive probes (GAMMA-MA) and IP massive sensors (IOTA-10G-MA), the central data retention system will receive an incredibly valuable volume of information.

Our challenge is to deliver powerful tools to the investigators that help them to dig into this huge mass of communication.

- Integration of CEREBRO-DRS with several IP probes and telephony sensors.
- Versatile archiving system, independent of sources
- Capacity to archive billions of records
- Business Intelligence tools embedded
- Display consolidated billing data
- Possibility to archive content and metadata
- Different policy of storage applicable



ADVANCED
SYSTEMS

TECHNICAL DETAILS

No limit in scalability in terms of storage duration and in terms of number of sensors

Capacity to integrate very high density storage system

(2 petabytes in 1 x 42U Rack)

SENSORS

The different used sensors for this solution are part of the GAMMA and IOTA family from Advanced Systems , those probes are performing the CDR extraction (for the voice part) and the IPDR extraction for the IP network. Once those extractions are done , the data is sent to the cerebro core technology. As an option, depending of the probe version chosen, the data retention solution can also handle the full content of communication and link it to the extracted metadata.

WAYS TO ACCESS THE DATA

The central data retention is designed to receive a huge quantity of information and to be able to index and store it in real time.

These real time indexation techniques are designed to ease the operational access to the data. Each investigator will be able to drill down the massive storage by searching and filtering on technical criteria (Email address, phone number, IP adress, unique service provider identifier, etc.)

Depending on the information available on the probe level, the search in the DRS can also be done on geolocation information, on document exchanges or on specific information relative to the source analyzed.

OPTIONAL GOOGLE-LIKE APPROACH

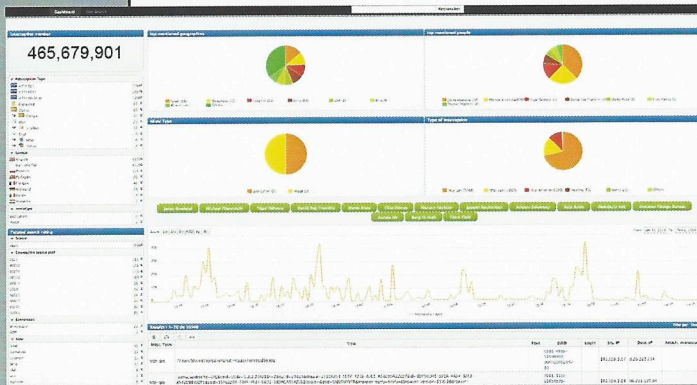
The google-like approach enhances the relevance of the archiving database by adding smart and efficient operational tools. Those tools allow the investigators to drill down in the billions of records through an ergonomic google-like interface with a time of response as quick as google. Advanced tools like faceted search to categorize results or graphical dashboards are also available in this option.

STORAGE POLICY

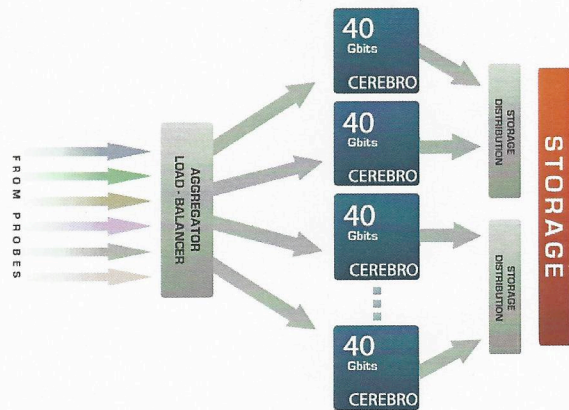
Depending on the type of information stored, the DRS can apply a different storage policy. The system can, for example, store all the metadata during 12 months and the communication content during 1 month only to optimize the required storage space.

BILLING

In addition to these features, the data retention system can be used with a billing option. The DRS is providing all the necessary information to monitor any kind of billing data.



GUI to search in the DRS



Principle of scalability



ADVANCED SYSTEMS

P.O. BOX: 500439
Internet City - Dubai - U.A.E.
Phone: +971 4 457 0331
Fax: +971 4 457 0332
Email: contact@advancedsystems.ae